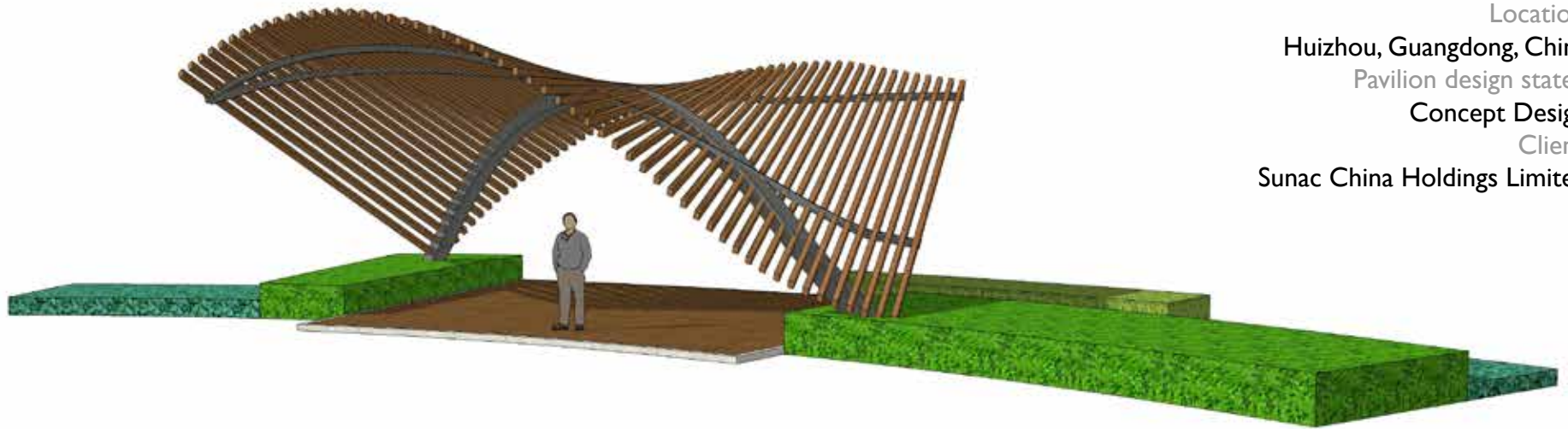


XIAOLU WU SPATIAL DESIGNER



Location:
Huizhou, Guangdong, China
Pavilion design states:
Concept Design
Client:
Sunac China Holdings Limited





Gold Coast in Daya wan Bay

Daya wan Bay coast beach is a public beach that has been loved by the locals and tourists for a long time. Daya Wan municipal government decided to upgrade the beach into a public coastal park by adding in more service facilities, walk path and outdoor furnishing.

Location:

Daya wan Bay, Guangdong, China

Project states:

In Construction

Client:

Governmental commission

Roles in:

Pavilion design using Rhinocero 5

Outdoor furnitures design with 3d modeling tools

Conceptual design wayfinding system



Gold Coast in Daya wan Bay



Albert's Winter Public Installation

Albert's Winter installation is an experience creator proposed in a historic site with the goal of re-purposing the public space by creating a winter garden. To highlight the sensation of stepping into the first snow, the installation multiplies the surfaces in verticle space and diversitfies the experience in walking in the fresh snow. Hydraulic mechanism is embeded into the sinking pots to emulate the motion of stepping in snow piles in the winter, and also create seating space in the summer lawn.

Shaw St.

Ossington Ave.

Location:
Toronto, ON, Canada
Design states:
Competition Design Concept

← To CBD District

Queen Street W

To Lakeshore →

CAMH Campus

To Parkdale →

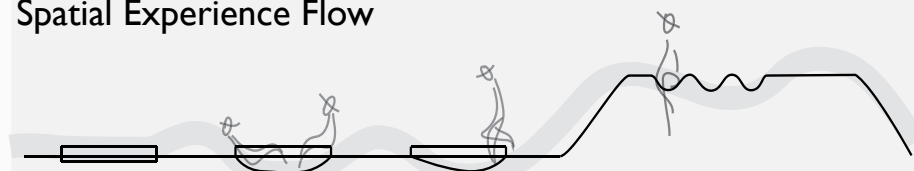


Sinking Pods

Parametric Fence

Climbing Plateau

Spatial Experience Flow



Organic formed fence - Lean against/ Sit

Climb / Walk up

Sink / Sit / Interact



Albert's Winter Public Installation

Cover / Seat

Vegetation

Flexing Net

Hydraulic
Sinking Mechanism



The No.8 Residential in Vanke City Qingyuan



Location:
Qingyuan, Guangdong, China
Project states:
Schematic and Design development
Client:
China Vanke Co., Ltd

No.8 Residential is the 8th phase of the development in the Vanke City compound in the city side of Qing yuan, Guangdong. This gated residential will house approximately 3000 young professional families.

The residential is site on a hill top with height of 20 meter above other ones. To utilized this geographic feature, we came up with a concept of *nest above the treetop*. Special design elements are incorporated in the narrative of creating a sense of nesting - home and community.



Roles in:

Materialized concept with 3d modeling tools

Participated in concept generation

Designed two series of outdoor furnitures for two concept plans

Pavilions and small architecture concept design

Visual identity system and signage design

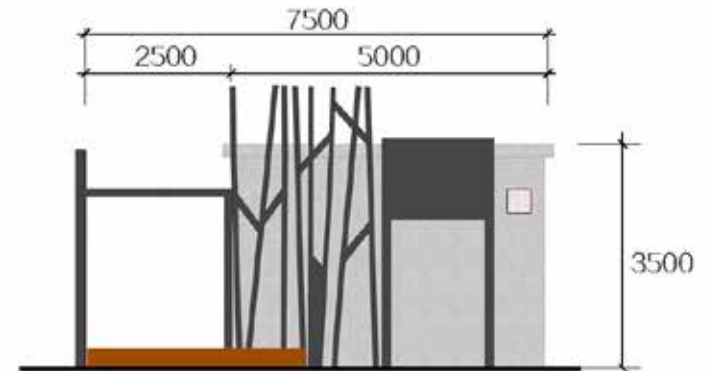
Created presentation packages

Site survey and research

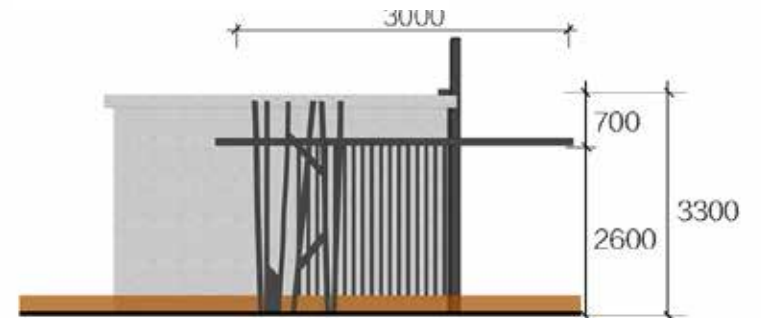
South Elevator Entrance



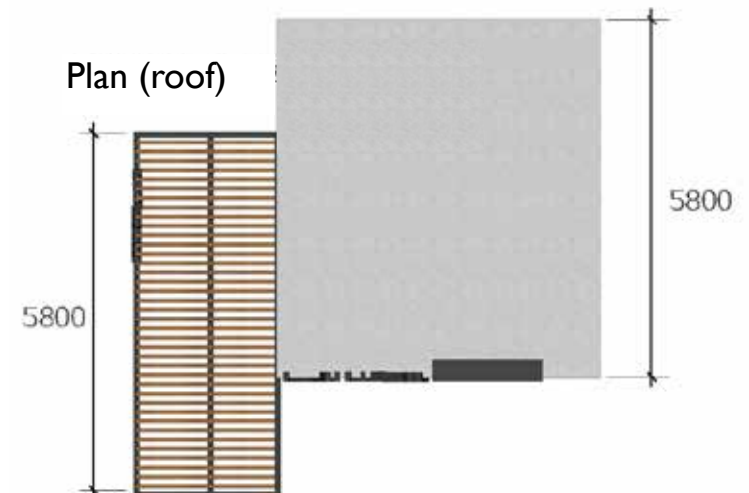
Elevation (front)



Elevation (side)



Plan (roof)



Building Block Terrace



A set of uniform 1000 X 1000 X 450H mm blocks are designed for this project. The terrace is thought to be the communal space that generates most interactions in residential, hence wide range of user's needs are attended, such as setting in different manners, stroller parkings, etc.

Stroller Parking

童车专属停放位和坡道



Chess Table

积木组成的榻榻米形式座位和小高台



Lighting Blocks

镂空模块, 点亮场景



Chatting Blocks

舒适木平台和积木靠背



Pet's Climbing Blocks

挖角积木组成攀爬和钻洞设施

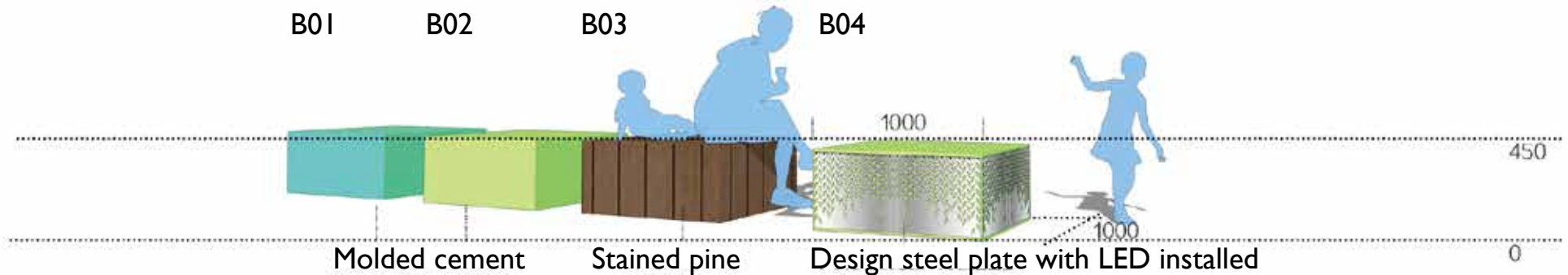


B01

B02

B03

B04



Community Pavilions

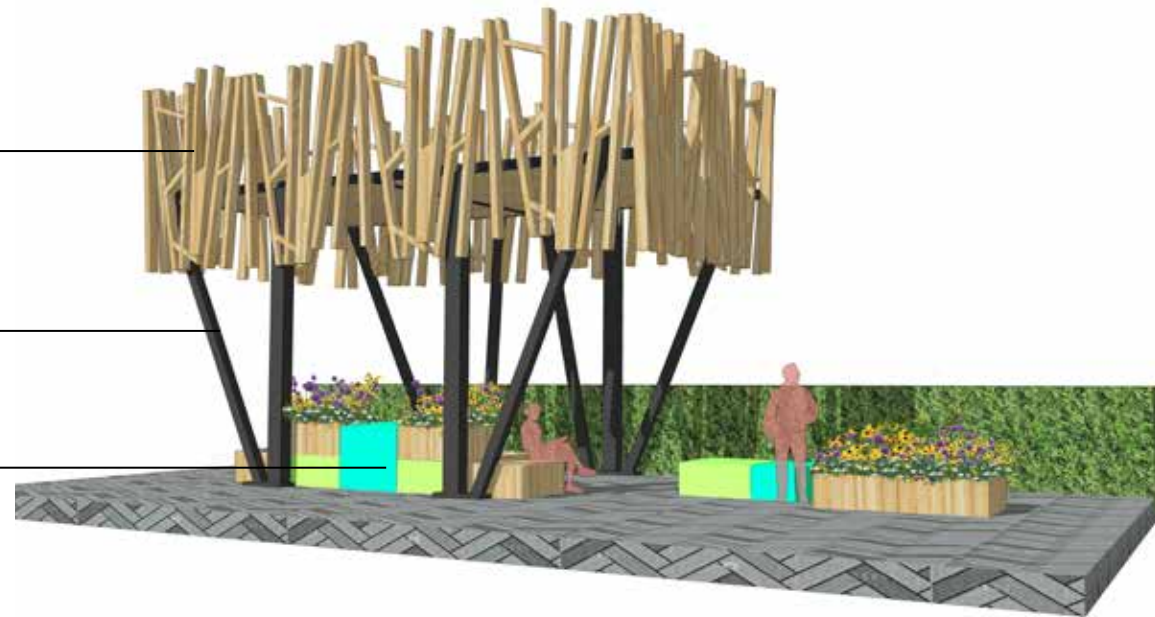
Nest

Consisting the storytelling nest on treetop, Nest is designed with an uplifting structure to raise the signature trellis, with the purpose to create a visual signal of arriving home for residents. Functionally, the Nest is a canopy that shields people from the elements in the common area of the residential.

Signature trellis

Uprising structure
“nest on tree”

Building Blocks
Seats+Planters



Fragrance

Connecting neighbours with a long belt bench with embedded planters for garnishing plants. The communal park emulates the local residents' backyard garden through their common food culture.

Designated vine trellis

Belt bench

Embedded planters



Habitat Creek

Habitat Creek is a tourist hiking park designed for city residents for weekend getaways. It hosts high-end hotels, themed restaurants and a camp site. All programmes are consciously ideated to represent playful discussions on paradoxical matters through space.

My role in the project is to design a series of lightweight architectures such as shower cabin, service canopy and stand-alone washroom. All pieces in the series come together to discuss the human relation with sound, light, and time.

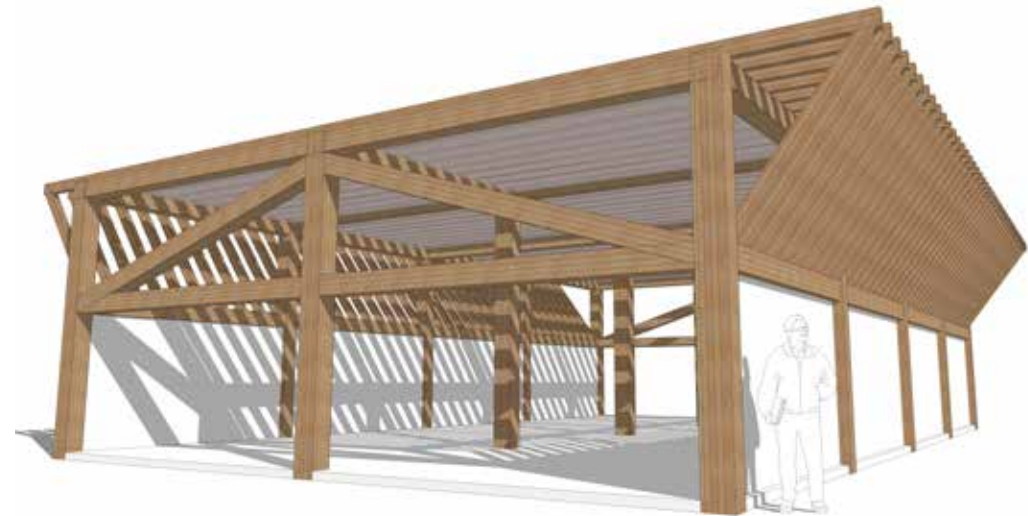
Location:
Huadu, Guangdong, China
Project status:
Concept and Schematic Design
Project Time
2016-2017



Pavilions for Thoughts

Drawing with Light

Featuring a pronounced rafter structure, the building depicts the trail of sunlight interiorly in the daytime; at night, interior light casts out through the rafter, luminates the site. The open rafter structure also allow condensation and odor to escape.



Beach Service Center

Area: 200 m²

Toilet stall: 8

Shower stall: 20



Dwell in Light

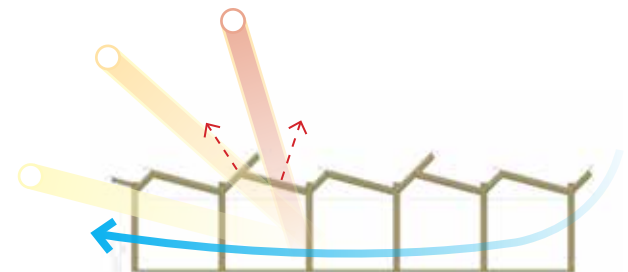
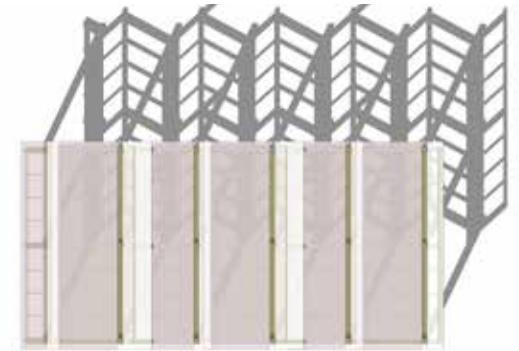
The architecture exercises creating a secure space that immerses human activities into nature by constructing a visually transparent and structurally breathable canopy form with native wood. The use of clear and reflective materials is to invite the right

amount of daylight in, and makes the daylight to be the medium that ties people's activities and nature in one.



Service and Gift Center

Area: 200 m²



Pavilions for Thoughts

Time collection

"A drop of water landing" is an old Chinese metaphor for a second in time passing away. Locating in the woods, this cabin is designed to enlarge the moment when morning dews running along the fold of leaves, in order to inspire campers to reconsider the meaning of time in nature.

Campsite Shower Cabin

Area: 200 m²

Shower stall: 8

Toilet stall: 12

Materials: tempered glass, bamboo



RoofValley gutter

leading rainwater to the collecting pond for further camping use.

Absolute Silence

Design for the children's playground, most vibrant part of the park, this restroom unit, is a sound vacuum tube with sound proof details. It is designer's sense of humor to create a drastic change of experience between sound and silence, or else, an absolute peaceful moment for the parents

Sound's Playground Restroom

Area: 25 m²

Toilet stall: 4

Materials: one-way stained glass, batten

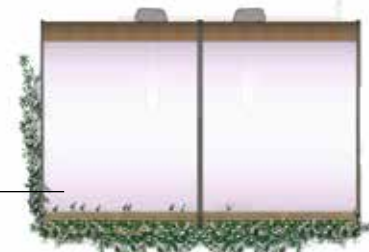


stained glass to visualize the acoustic vibrancy

plumbing system moved outside to ensure interior silence



roof skylight



Nature Country & Teddy's Farm



Nature Country is a Teddy Bear themed farm and park located in Foshan, Guangdong, China, a traditional farming area in the rapidly industrializing Pearl River Delta region. The goal of the project is to maintain the local agriculture-centered industry and bring in tourism as the innovative approach in reaction to this developing trend.

Besides opening a hand-pick vineyard and orchard, the farm also features a small scale lodge and a container hotel, outdoor activities camp and a restaurant using the fresh-picked ingredients on site.

Location: Foshan, Guangdong, China

Project states: Phase I completed, in operation

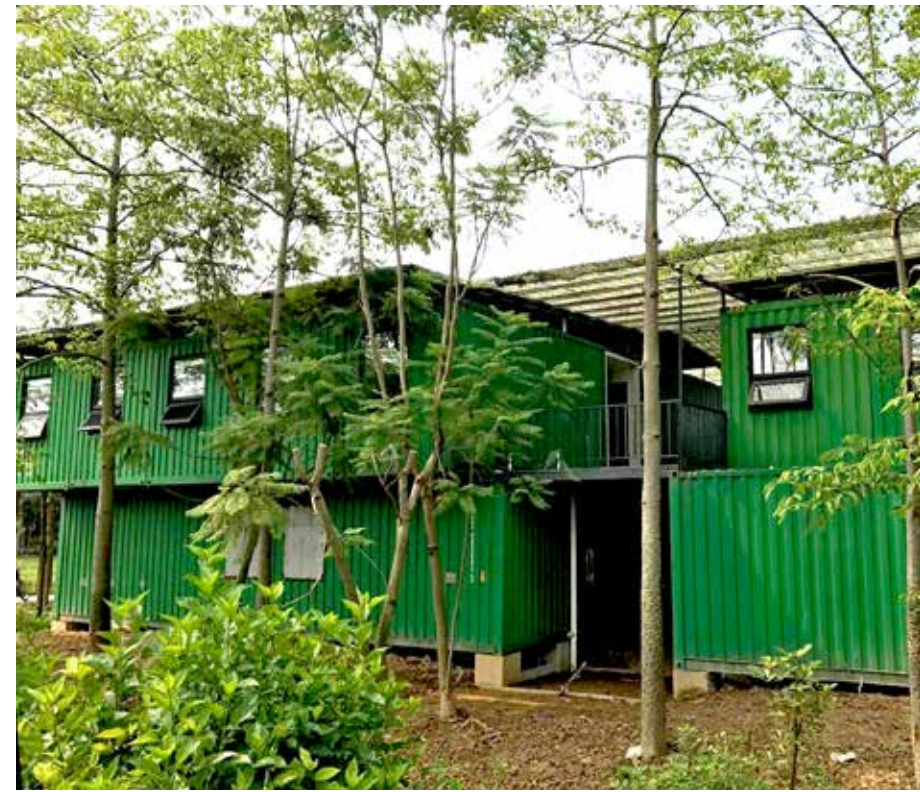


Nature Country & Teddy's Farm



Roles in:

- 3d** modeling for dimension and material details
- P**lan development from design and construction standpoints
- C**ommunicated with Teddy Bear copyright agency to bring in branded program
- S**ourced artwork suppliers
- P**repared documents for government inspections
- S**ignage design in mechanical details
- A**ided in graphic design
- S**ite survey



K Block Residentials



Path Stream

Palm Garden

Central Lawn

Dipping Pond

Age 3-10 Corner

Age 0-3 Corner

Senior Activities

Jogger's Loop

Commercial Outskirt

Residential Condo

Kindergarten

Siting at the outer rim of Guangzhou, K Block is a gated community with 11 residential condo units, shops and a kindergarten on the outskirts. Taken into consideration the daily needs of a clientele of young professional families with senior parents, this landscape plan proposes to create a shared space that accommodates activities for residents of all ages.

Roles in:

Schematic plan development using sketch and AutoCad

Plan visualization using Photoshop

Scale and detail modeling


Design research and development children's playground and equipments

Presentation package preparation

Location: Guangzhou, China

Project status: Schematic Design

Client: Greenland Group



▼ Children and senior's programs are placed in one area for the convenience for grandparents to take care of the youngs

▲ According to sunray path study, sunray only hits certain area of the communal garden. In that area, we planned an annual flowers planting zone and the most active programmes for children and seniors.

◀ Entrance passage is accompanied by water feature, creating an experience of having a running stream by feet as people walking into the garden.



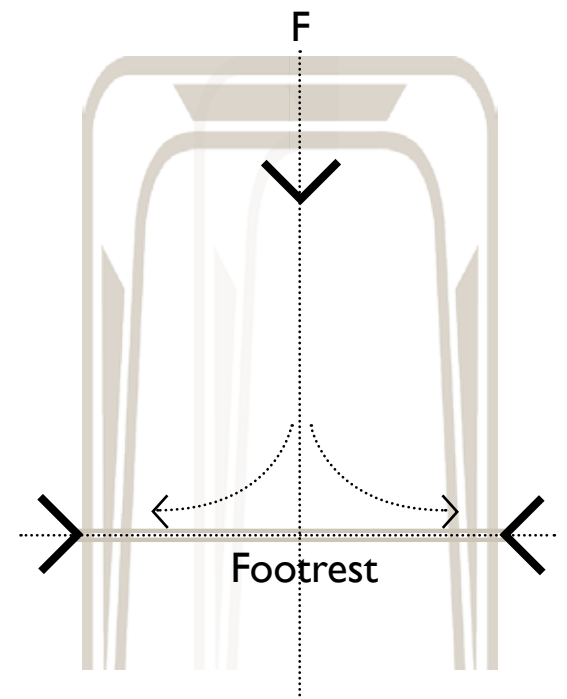
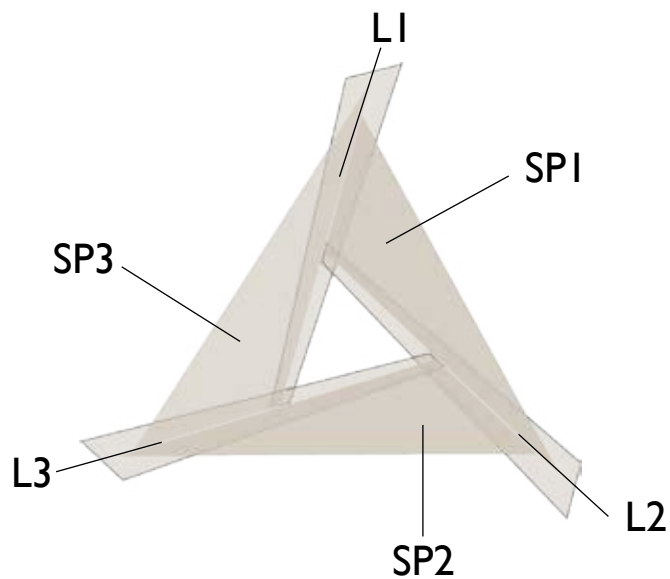
3 Stool

This project was a happy collaboration with Char Kennedy and Romney Shipway



Interlock

Legs and sit-pans interlocking into the structure, allows the components to be shipped flat-packed and come together without hardware.



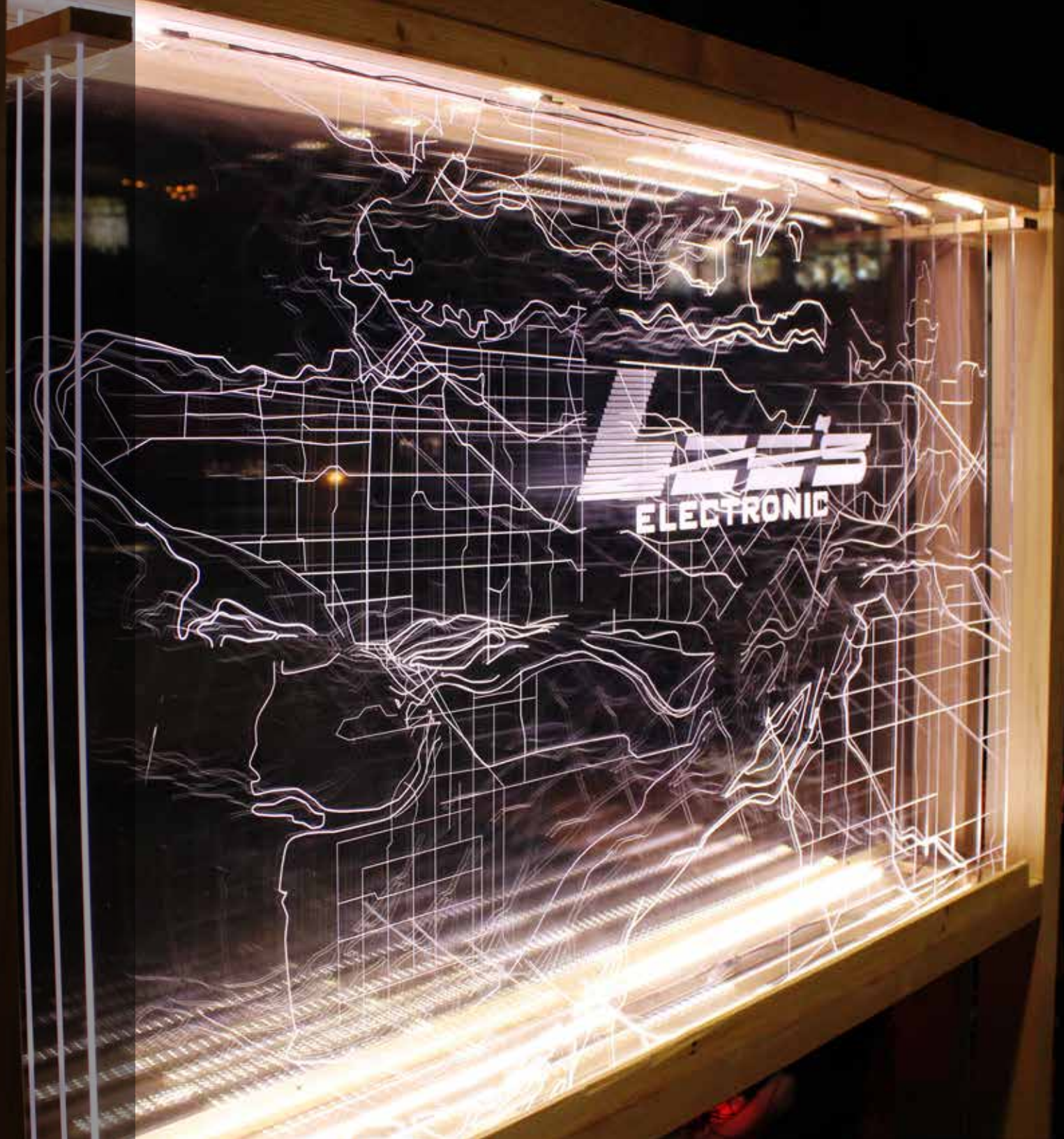
Map

The Map interactive installation is designed for Lee's Electronic Component Limited, and installed at the Vancouver Mini Maker Faire. The piece is to advertise the company's brand in the Vancouver maker community as a knowledge sharing venue for creatives and innovators, beyond the already successful role in supplying wide range of electronic components to the local industries.

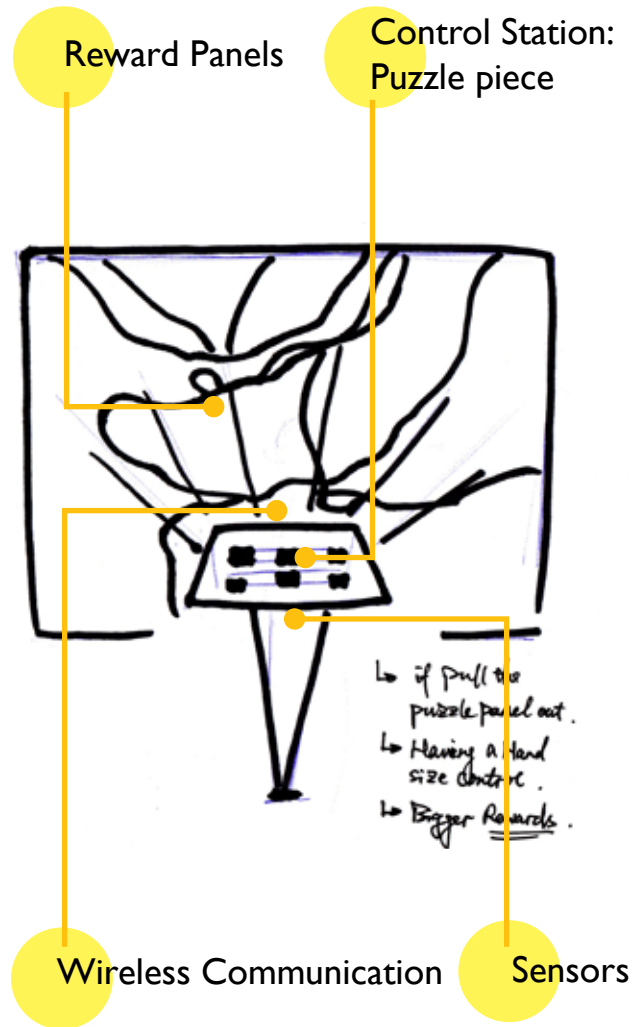
The Map marries the traditional jigsaw puzzle and wireless communication technology to re-enact a tactile gaming experience.

Roles in:

Ideas and form generation
Industrial design in mechanical and assembly details
Schematic drawings for laser etching
Sourced materials
Fabrication
Aided in circuitry design, wiring and coding

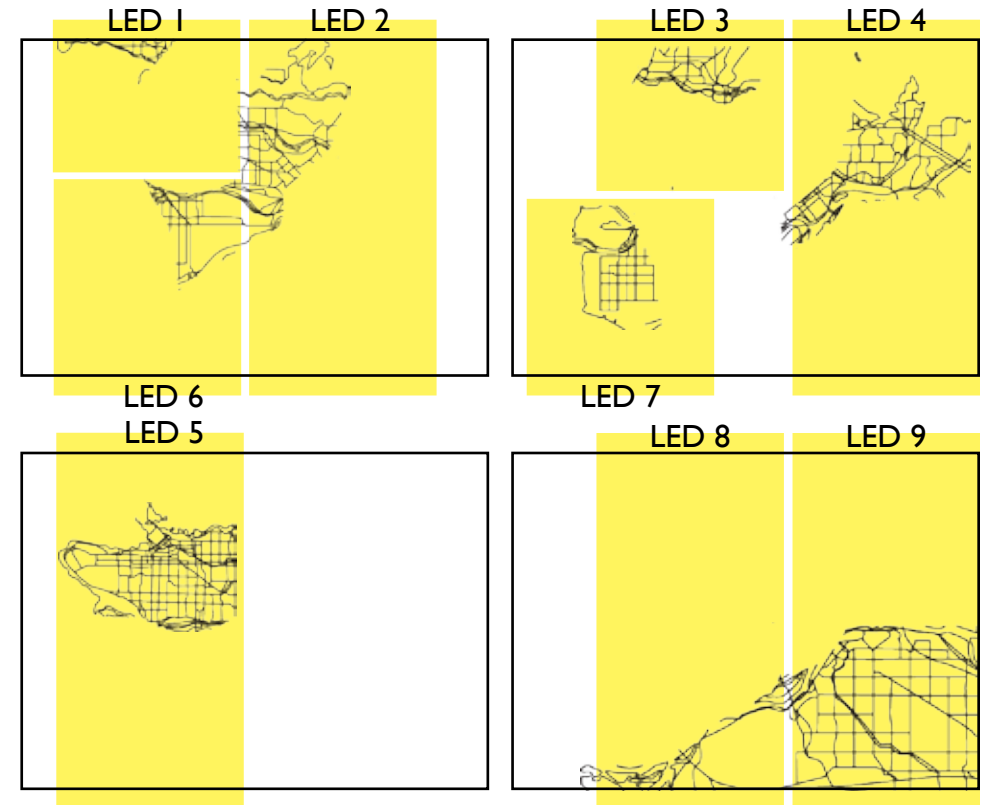


Initial Idea

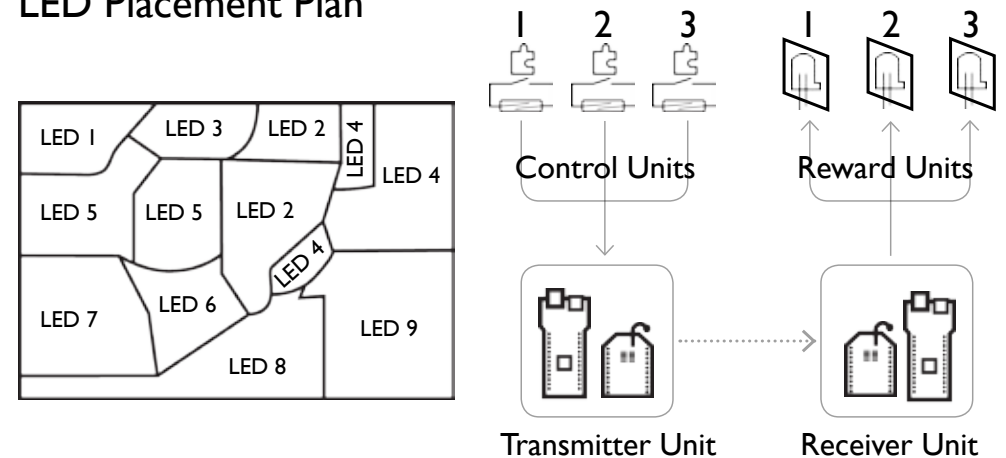


Layering Schematic

sectioning the drawing into 9 zones, and etch them strategically onto 4 acrylic panels, on which they can be lightened up separately



LED Placement Plan





Sponsored by
Lee's Electronic
Component Ltd.
Electronic support:
Wing Ho
Raymond Wong
Cheng Cao
Zeph Chan



Vancouver Mini Maker Faire 2013



Work Experience

August 2018 to present

URBIS Limited

Architectural Graphic Designer

materializing urban and architectural design from plan to spatial details with 3D rendering tools; creating visually compelling artworks for landscape design down to planting scheme precision.
Hong Kong

October 2016 to June 2018

KMCM

Assistant Landscape Designer, In-house Industrial Designer

realizing concepts in mechanical and material details; visualizing concept drawings with 3D modeling tools; creating artworks for landscape design plans; pavilions and public furniture design; design research
Guangzhou Guangdong, China

July 2015- January 2016

Cortex Design Inc

Production Technologist

performed quality assurance and product assembly assisted in quality assurance and process improvement through my knowledge of human factors and mass manufacturing. Was part of a QA improvement effort that saw defective rates reduced significantly.

Industrial Design Intern

Worked with company principal to help realize studio aesthetic and work-flow goals.
Managed Cortex social media images and visibility.
Toronto ON, Canada

Industry Exposure

Evergrande Real Estate Group China

Children's World Indoor theme park Ocean module

Lead concept generation based on wide range design research, developed landscape plan within requirements upon public park regulations; embedded standardized a module system into client' chain theme park plan statewide.

Confidential

Luxurious Residential Mansions

Sourced contemporary artwork for investment; developed landscape plans; designed outdoor furnitures in craftsmanship level detail; prepared package for presentations and government inspection; 3d modeled and rendered for visualization.

China VANKE Co., LTD.

VANKE CITY Residential Compound

Participated in site survey and developed concept with site's topography feature; designed two series of outdoor furniture and signages with 3d modeling tools.

Greenland Holdings Corp., Ltd.

K Block Residential

Designed schematic plan incorporated programmes for all-age residents, prepared presentation package.

Education

Emily Carr University Art and Design

Bachelor of Design, Industrial Design
Vancouver BC, Canada.

Ontario College of Art and Design University

Art, Architecture and Public Space
Continuing study course.
Toronto ON, Canada

Technical Proficiency

- 3DSolidwork, Rhino, AutoCad, Sketchup
- Adobe Photoshop, Illustrator, InDesign, Acrobat Pro.
- Experience in operating CNC / laser cutting machines
- Experience in woodworking
- Ceramic wheel throwing, mould making and casting
- Industrial softshop machines and pattern drafting
- Production level soldering skills and electronic debugging

Language

Fluent (verbal and written) in
English, Chinese Mandarin and Cantonese